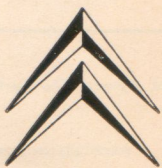
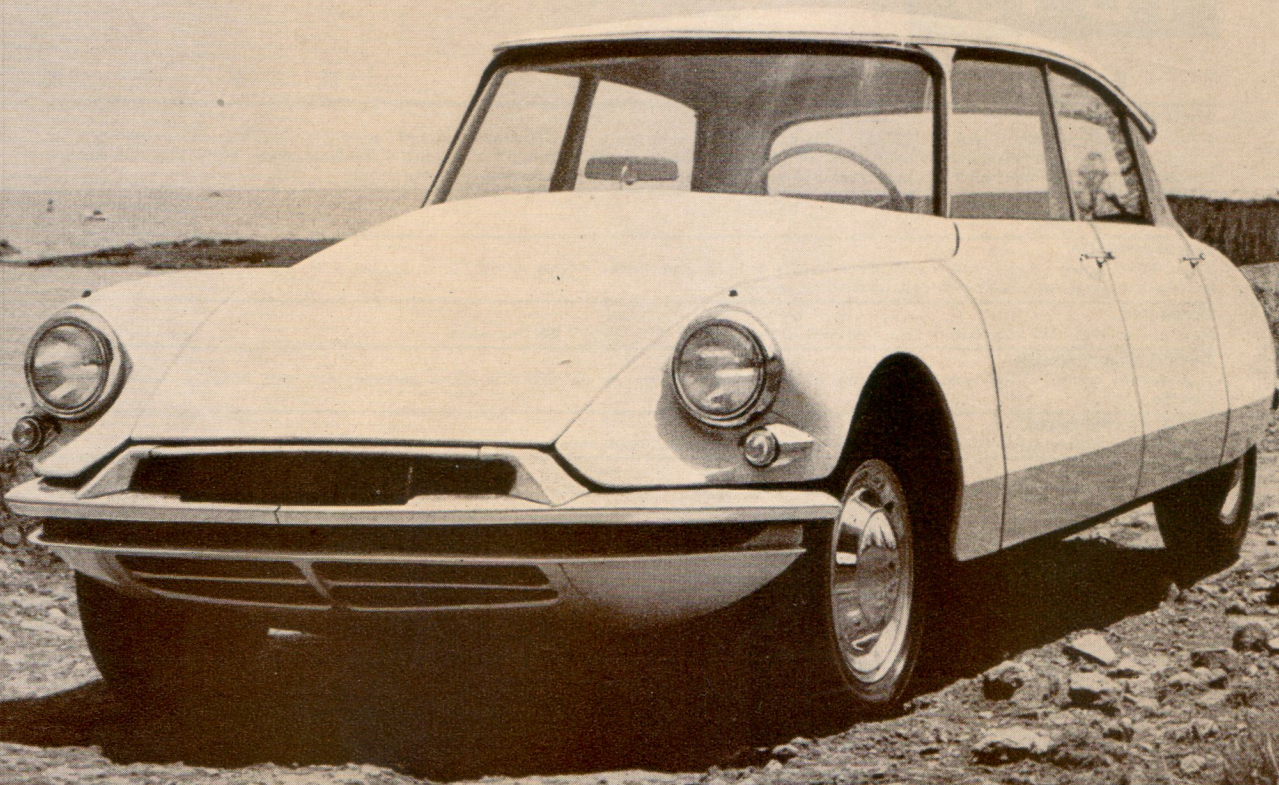


The fun of the trip is in the ride...with a CITROEN! To beach or supermarket...to city or country club... wherever you travel, a new world of motoring pleasure awaits you and your family. Here is the cloud-soft comfort of AIR-OIL SUSPENSION, with the exclusive POWER-LIFT that lets you adjust the riding level of the car to suit the road. Here is the personal control of the sports car...the tenacious roadability of FRONT-WHEEL DRIVE. In a CITROEN, the functional car with advanced engineering, you will always enjoy safe, economical, restful motoring. Wherever you are driving in pursuit of happiness, take a CITROEN...it is your assurance of extra-enjoyment on the road!

In
pursuit
of
happiness...
drive
a
Citroën!



YOUR AUTHORIZED DEALER IS: **WARD & WALLACE, INC.**

NEW ENGLAND DIST.

CITROËN

Bath-Brunswick

BRUNSWICK, MAINE

1958

DS 19

T E C H N I C A L D A T A

ENGINE.

4 Cyl. OHV 60° • Bore: 78 mm. or 3.07 ins., Stroke 100 mm. or 3.94 ins. • Total displacement 1,911 cc or 116.6 cu. ins. • Compression ratio 7.5 to 1 • 75 bhp at 4,500 rpm • Pressure lubricated by mechanical pump • Zenith, Stromberg or Weber dual-throat carburetor • Mechanical gas pump • 6V, 75 Am.h. battery • Electric starter • 210 Watt generator with regulator • Cooling system, pump and thermostat • Nylon fan.

CLUTCH.

Single plate, dry type, automatic hydraulic control.

TRANSMISSION.

Front Wheel Drive • Final drive 9 x 35, spiral bevel • 4 speeds and reverse. Gear ratios: Top: 3.30, 3rd: 4.78, 2nd: 7.35, 1st: 13.8 • Hydraulic operation • Selector lever under the wheel.

STEERING.

Power steering, rack-and-pinion type • 3 turns lock to lock—36 feet turning circle • "No spoke" steering wheel.

FRONT SUSPENSION.

Independent wheels • Two suspension arms and one air-oil unit with shock absorber for each wheel • Anti-roll bar • Levelling device.

REAR SUSPENSION.

Independent wheels • One suspension arm and one air-oil unit with shock absorber for each wheel • Anti-roll bar • Levelling device.

BRAKES.

MAIN BRAKING SYSTEM: Disc brakes on the front wheels, drum brakes on the rear wheels • Brake pressure distributed between front and rear wheels according to axle loading • Wear of front linings automatically compensated.

EMERGENCY BRAKE: Foot-operated on front discs.

WHEELS AND TIRES.

Center lock nut wheels equipped with Michelin "X" Steel and Cord 165 x 400.

BODY.

5 seater, monoshell construction • Platform with side members of welded sheet steel, flat floor, no drive shaft tunnel. Full length aerodynamic underpan. Total visibility. All around safety glass AS1 and AS2.

WEIGHT, DIMENSIONS AND CAPACITIES.

Curb weight 2,475 lbs. • Wheel Base: 123 ins. • Track: front 59 ins. Rear 51¼ ins. • Overall length: 189 ins. • Overall width: 70½ ins. Overall height: 58 ins. • Turning circle: 36 ft. • Gas tank: 17 gallons • Crank case 8.5 pints • Water Capacity 2½ gal. • Gear Box and differential 5.3 pints.

Trunk: 17.5 cubic feet • Spare wheel housed under the hood.

HEATING AND VENTILATION.

Heating for front and rear passengers and screen defrosting by independent radiators and electric fan • Air-diffusers at both ends of the dashboard.

PERFORMANCE.

Top speed over 95 mph • 3rd gear 75 mph • 2nd gear 52 mph • 1st gear 27 mph • Mileage: up to 32 mpg

POWER LIFT.

Built-in automatic jacking. Adjustable clearance (6.5" to 11.5").

ID 19

T E C H N I C A L D A T A

ENGINE.

4 Cyl. OHV 60° • Bore: 78 mm. or 3.07 ins., Stroke 100 mm. or 3.94 ins. • Total displacement 1,911 cc or 116.6 cu. ins. • Compression ratio 7.5 to 1 • 70 bhp at 4,500 rpm • Pressure lubrication by mechanical pump • Solex 34 carburetor • Mechanical gas pump • 6 Volt battery Electric starter • 210 Watt generator with regulator • Cooling system, pump and thermostat • Nylon fan.

CLUTCH.

Single plate, dry type.

TRANSMISSION.

Front Wheel Drive • Final drive 9 x 35, spiral bevel • 4 speeds and reverse • Gear ratios: Top: 3.30, 3rd: 4.78, 2nd: 7.35, 1st: 13.8 • 2nd, 3rd, 4th fully synchromesh • Gearshift lever on steering column.

STEERING.

Rack and pinion • ¾ turn lock to lock • 36 feet turning circle • "No spoke" steering wheel.

FRONT SUSPENSION.

Independent wheels • Two suspension arms for each wheel • One air-oil unit with shock absorber for each wheel • Anti-roll bar • Levelling device.

REAR SUSPENSION.

Independent wheels, one suspension arm and one air-oil unit with shock absorber for each wheel • Anti-roll bar • Levelling device.

BRAKES.

MAIN BRAKING SYSTEM: Disc brakes on the front wheels, drum brakes on the rear wheels • Wear of front linings automatically compensated.

EMERGENCY BRAKE: Hand operated on front discs.

WHEELS AND TIRES.

Center lock nut wheels equipped with Michelin "X" Steel and Cord 165 x 400.

BODY.

5 seater, monoshell construction • Platform with side members of welded sheet steel, flat floor, no drive shaft tunnel. Full length aerodynamic underpan. All around safety glass AS1 and AS2. Total visibility.

WEIGHT DIMENSIONS AND CAPACITIES.

Curb weight 2,475 lbs. • Wheel Base: 123 ins. • Track: front 59 ins. Rear: 51¼ ins. • Overall length: 189 ins. • Overall width: 70½ ins. Overall height: 58 ins. • Turning circle: 36 ft. Gas tank: 17 gallons • Crank case 8.5 pints • Gear box and differential 5.3 pints • Water capacity 2½ gallons • Trunk: 17.5 cubic feet • Spare wheel housed under the hood.

HEATING AND VENTILATION.

Heating for front and rear passengers. Air-diffusers at both ends of the dashboard.

PERFORMANCE.

Top speed over 90 mph • 3rd gear 72 mph • 2nd gear 50 mph • 1st gear 25 mph • Mileage: up to 35 mpg.

POWER LIFT.

Built-in automatic jacking. Adjustable clearance (6.5" to 11.5").

This brochure is distributed for general information and does not bind the Citroen Factory and/or its Distributors and Agents. The Factory reserves the right to modify without notice, specifications, equipments, etc.

↑
CITROEN
↑