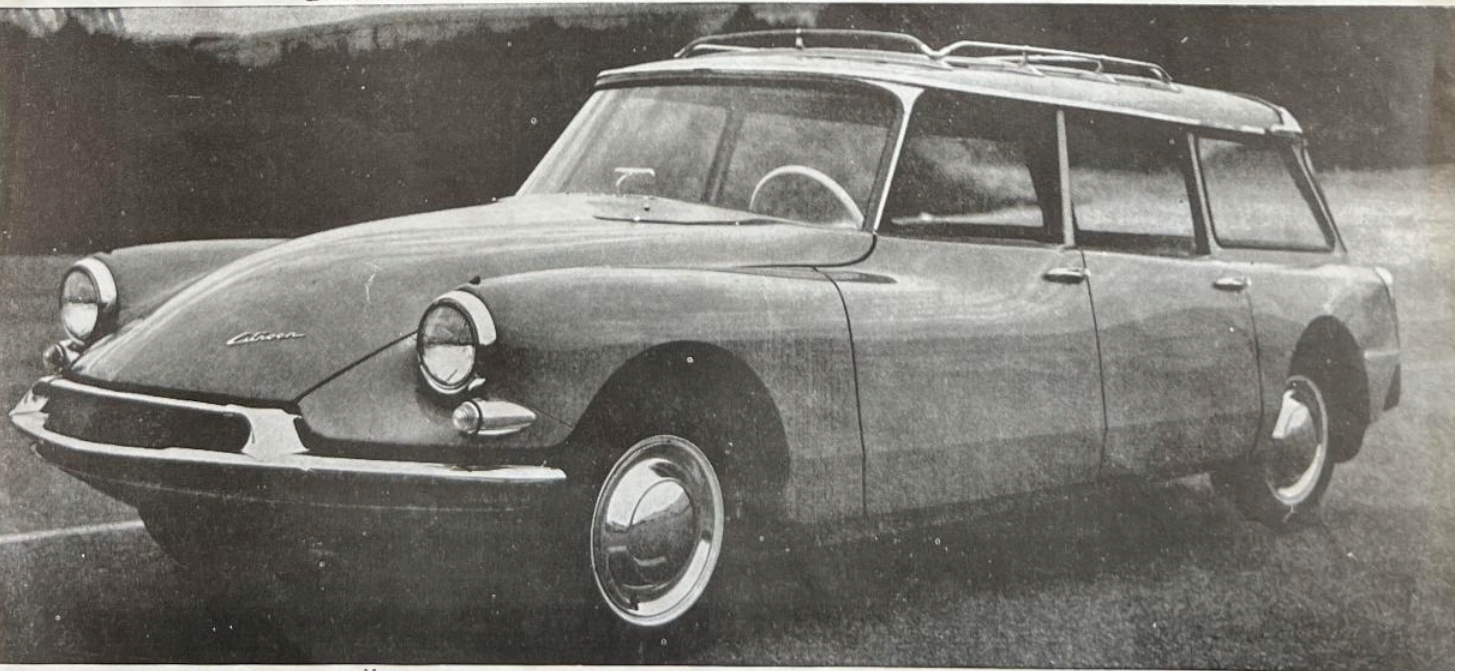
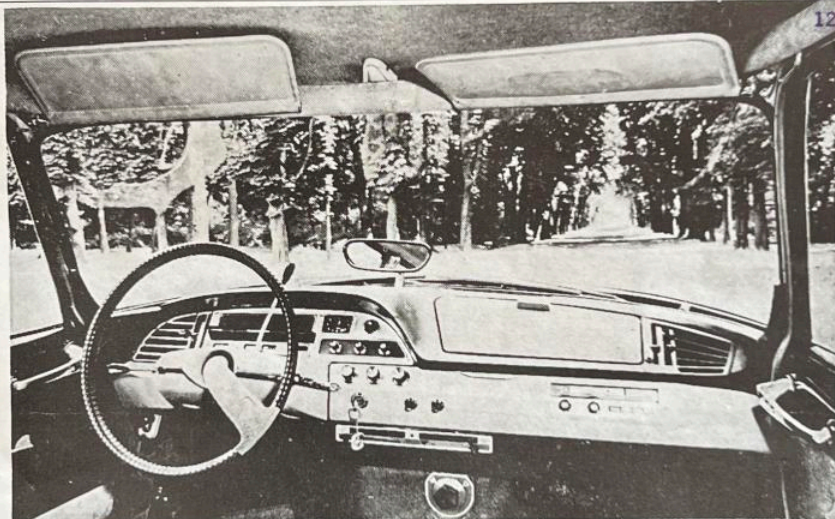


▲ CITROËN DS 19, ID 19 ▲

SARGENT SALES & SERVICE

1205 SEYMOUR STREET  
VANCOUVER 2, B.C.



▲ CITROËN 4-DOOR 8 PASSENGER STATION WAGON ▲

CITROËN CANADA LTÉE • 7144 CÔTE DES NEIGES, MONTRÉAL, P.Q., 739-2241  
FACTORY BRANCH



SBCITDSID19-4

9/1/2010

1 0 CIT

# DS 19

**ENGINE.** 4 Cyl. OHV 60° • Bore: 78 mm. or 3.07 ins., Stroke 100 mm. or 3.94 Ins. • Total displacement 1,911 cc or 116.6 cu. ins. • 88 cv SAE at 4,500 rpm • 105 ft. lbs. torque at 3,500 rpm • Compression ratio: 8,5/1 • Pressure lubricated by mechanical pump • Carburetor: Weber double barrel 24/32 DDC • Mechanical gas pump • 12 Volt electrical system • Generator with regulator • Water cooling system with pump and thermostat • Cast aluminum cylinder head cover • Nylon fan.

**CLUTCH.** Single plate, dry type, automatic hydraulic control with centrifugal regulator.

**TRANSMISSION.** Front Wheel Drive • Final drive 8 x 31, spiral bevel • 4 speeds and reverse • Gear ratios: Top: 3.30, 3rd: 4.78, 2nd: 7.35, 1st: 13.8 • 2nd, 3rd, 4th fully synchromesh, automatically activated • Selector lever mounted on dashboard.

**STEERING. POWER STEERING,** rack-and-pinion type • 3 turn lock to lock — 36 feet turning circle • "No spoke" steering wheel.

**FRONT SUSPENSION.** Independent wheels • Two suspension arms and one air-oil unit with shock absorber for each wheel • Anti-roll bar • Levelling device.

**REAR SUSPENSION.** Independent wheels • One suspension arm and one air-oil unit with shock absorber for each wheel • Anti-roll bar • Levelling device.

## STANDARD EQUIPMENT

Air-oil Suspension with self level ride • Power steering • Power Disc brakes • Semi automatic transmission • Power jacking system • Clock • Turn signals • Reclining bed seats • Stainless steel wheel covers • Stainless steel trim • Windshield washers • Trunk light and courtesy light • Dimming rear-view mirror • Padded foam rubber carpeting • Michelin "X" safety tires • Folding center arm rest • Mileage and trip odometers • Dual horns, etc. • Heavy Duty Heater with rear window defroster • Dust proof equipment.

**BRAKES. POWER BRAKING SYSTEM:** Disc brakes on the front wheels, drum brakes on the rear wheels • Brake pressure distributed between front and rear wheels according to axle loading • Wear of front linings automatically compensated.

**EMERGENCY BRAKE:** Foot-operated on front discs.

**WHEELS AND TIRES.** Center lock nut wheels equipped with Michelin "X" Steel and Cord 165 x 400.

**BODY.** 5 seater, monoshell construction • Platform with side members of welded sheet steel, flat floor, no drive shaft tunnel. Full length aerodynamic underpan. Total visibility. All around safety glass AS1 and AS2.

**WEIGHT, DIMENSIONS AND CAPACITIES.** Curb weight 2,590 lbs. • Wheel Base: 123 ins. • Track: front 59 ins. Rear 51 1/4 ins. • Overall length: 189 ins. • Overall width: 70 1/2 ins. Overall height: 58 ins. Turning circle: 36 ft. • Gas tank: 14 imperial gallons • Cooling system: 11 imperial quarts • Crank case: 3 1/2 imperial quarts • Gear box and differential 3 1/2 imperial pints • Trunk: 17.5 cubic feet • Spare wheel housed under the hood.

**HEATING AND VENTILATION.** Heating for front and rear passengers and screen defrosting by independent radiators and electric fan • Air-diffusers at both ends of the dashboard.

**PERFORMANCE.** Top speed over 100 mph • Mileage: up to 32 mpg.

**POWER LIFT.** Automatic Jacking. Adjustable road clearance. Lowest Position: 4.2 ins. • Normal Driving Position: 6.4 ins. • High Position: 12 ins.

# ID 19

**ENGINE.** 4 Cyl. OHV 60° • Bore: 78 mm. or 3.07 ins., Stroke 100 mm. or 3.94 ins. • Total displacement 1,911 cc or 116.6 cu. ins. • Compression ratio 7.5 to 1 • 70 bhp at 4,500 rpm • Pressure lubrication by mechanical pump • Solex 34 carburetor • Mechanical gas pump • 12 volt electric system with electric starter • Generator with regulator • Cooling system, pump and thermostat • Nylon fan.

**CLUTCH.** Single plate, dry type.

**TRANSMISSION.** Front Wheel Drive • Final drive 8 x 31, spiral bevel • 4 speeds and reverse • Gear ratios: Top: 3.30, 3rd: 4.78, 2nd: 7.35, 1st: 13.8 • 2nd, 3rd, 4th fully synchromesh • Gearshift lever on steering column.

**STEERING.** Rack and pinion • 4 1/4 turn lock to lock • 36 feet turning circle • "No spoke" steering wheel.

**FRONT SUSPENSION.** Independent wheels • Two suspension arms for each wheel • One air-oil unit with shock absorber for each wheel • Anti-roll bar • Levelling device.

**REAR SUSPENSION.** Independent wheels, one suspension arm and one air-oil unit with shock absorber for each wheel • Anti-roll bar • Levelling device.

**BRAKES. POWER BRAKING SYSTEM:** Disc brakes on the front wheels, drum brakes on the rear wheels • Brake pressure distributed between front and rear wheels according to axle loading • Wear of front linings automatically compensated.

**EMERGENCY BRAKE:** Hand operated on front discs.

## STANDARD EQUIPMENT

Air-oil Suspension with self level ride • Power jacking system • Heavy duty Heater with rear window defroster • Clock • Turn signals • Reclining bed seats • Stainless steel wheel covers • Stainless steel trim • Windshield washers • Trunk light and courtesy light • Dust proof equipment • Padded foam rubber carpeting • Michelin "X" safety tires • Folding center arm rest.

**WHEELS AND TIRES.** Center lock nut wheels equipped with Michelin "X" Steel and Cord 165 x 400.

**BODY.** 5 seater, monoshell construction • Platform with side members of welded sheet steel, flat floor, no drive shaft tunnel. Full length aerodynamic underpan. All around safety glass AS1 and AS2. Total visibility.

**WEIGHT, DIMENSIONS AND CAPACITIES.** Curb weight 2,490 lbs. • Wheel Base: 123 ins. • Track: front 59 ins. Rear 51 1/4 ins. • Overall length: 189 ins. • Overall width: 70 1/2 ins. • Overall height: 58 ins. • Turning circle: 36 ft. • Gas tank: 14 imperial gallons • Crank case 3 1/2 imperial quarts • Gear box and differential 3 1/2 imperial pints • Water capacity 11 imperial quarts • Trunk: 17.5 cubic feet • Spare wheel housed under the hood.

**HEATING AND VENTILATION.** Heating for front and rear passengers. Air-diffusers at both ends of the dashboard.

**PERFORMANCE.** Top speed over 90 mph • Mileage: up to 32 mpg.

**POWER LIFT.** Automatic Jacking. Adjustable road clearance. Lowest Position: 4.2 ins. • Normal Driving Position: 6.4 ins. • High Position: 12 ins.

# STATION WAGON

SPECIFICATIONS SAME AS ID-19 WITH FOLLOWING EXCEPTIONS:

**BODY.** 6/8 seater, 4 door, with full opening tailgate • Monoshell construction • Platform with side members of welded sheet steel, flat floor, no drive shaft tunnel. Full length aerodynamic underpan. All around safety glass AS1 and AS2. Total visibility.

**ECONOMY.** Over 30 MPG at a steady 50 MPH.

## STANDARD EQUIPMENT

An aluminum luggage rack is standard equipment on "Luxe" and "Comfort" models, as are Power Disc Brakes, heater and defroster, clock, Michelin "X" tires, windshield washers, and stainless steel wheel covers. "Comfort" model has reclining bed seats and folding center arm-rest.

**WEIGHT, DIMENSIONS AND CAPACITIES.** Curb weight 2,850 lbs. • Payload 1,540 lbs. • Wheel Base: 123 ins. • Track: front 59 ins. Rear: 51 1/4 ins. • Overall length: 196 ins. • Overall width: 70 1/2 ins. Overall height: 59 ins. • Gas tank: 14 imperial gallons • Crank case 3 1/2 imperial quarts • Gear box and differential 3 1/2 imperial pints • Cooling system 9 imperial quarts • Spare wheel housed under the hood.

*You'll ride on air for the rest of your life...*

The fun of the trip is in the ride...with a CITROEN! To beach or supermarket...to city or country club... wherever you travel, a new world of motoring pleasure awaits you and your family. Here is the cloud-soft comfort of Air-Oil Suspension, with the exclusive Power-Lift that lets you adjust the riding level of the car to suit the road. Here is the personal control of the sports car...the tenacious roadability of Front-Wheel Drive. In a CITROEN, the functional car with advanced engineering, you will always enjoy the sage, economical, restful motoring. Wherever you are driving in pursuit of happiness, take a CITROEN...it is your assurance of extra-enjoyment on the road!