

'72

CITROËN 



DS21 Pallas

DS21

D Special



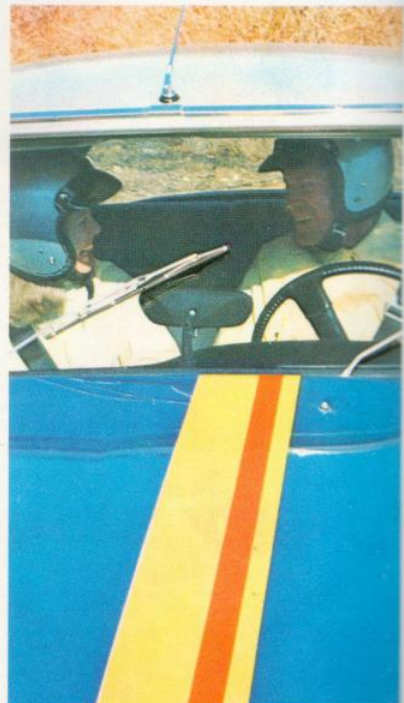
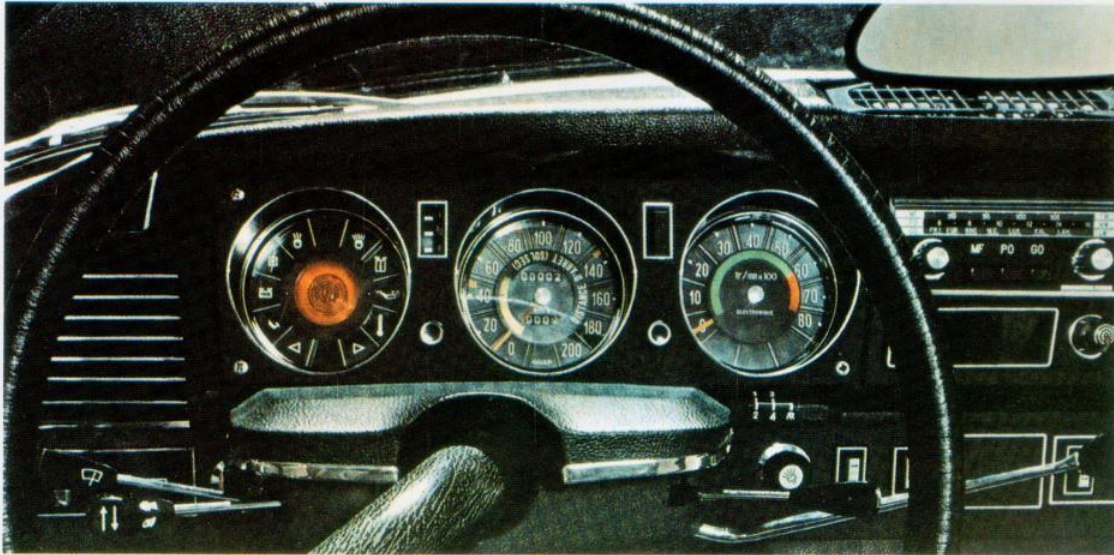
CITROËN D SERIES—NEW AS 1972

Even more sophisticated aerodynamic design. Even cleaner, swifter lines for front end, hood and fenders.

New quad headlights. A newly engineered instrument panel. A tachometer.

That's the new Citroën D series for 1972.

There's new stability and performance and silent



comfort in the 100 to 115 mph range. And great new cruise economy, as well—up to 25 mpg!

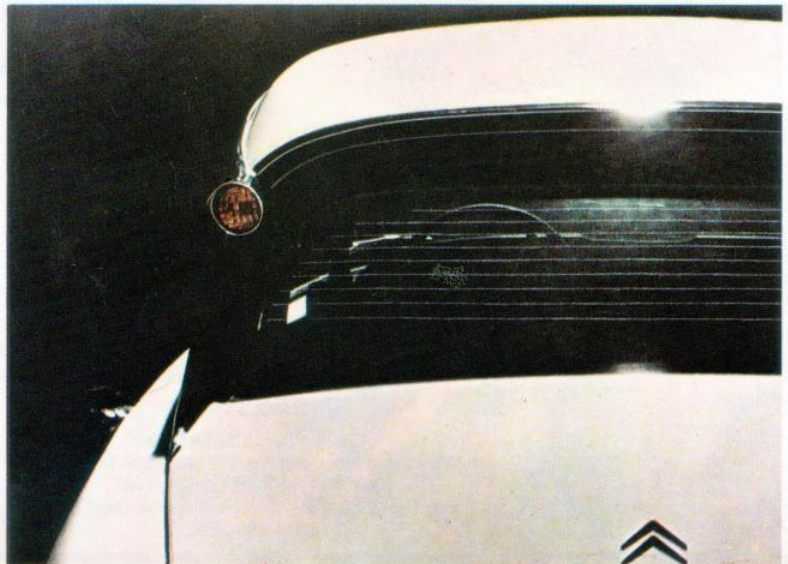
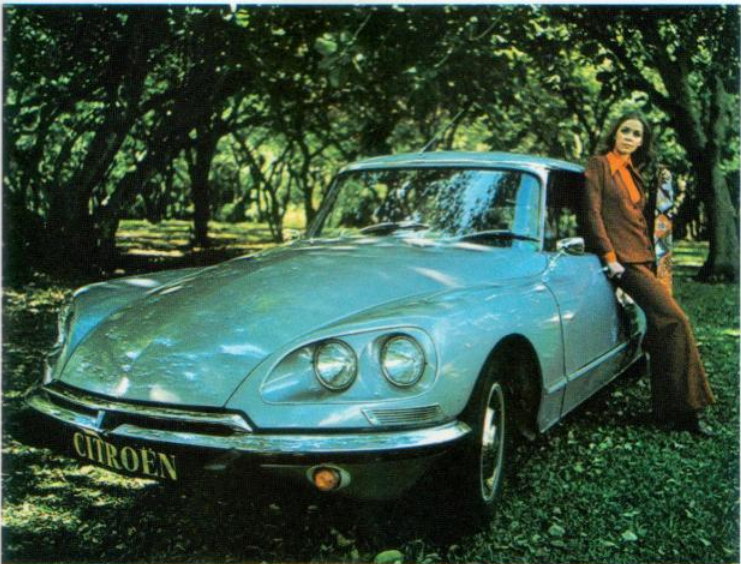
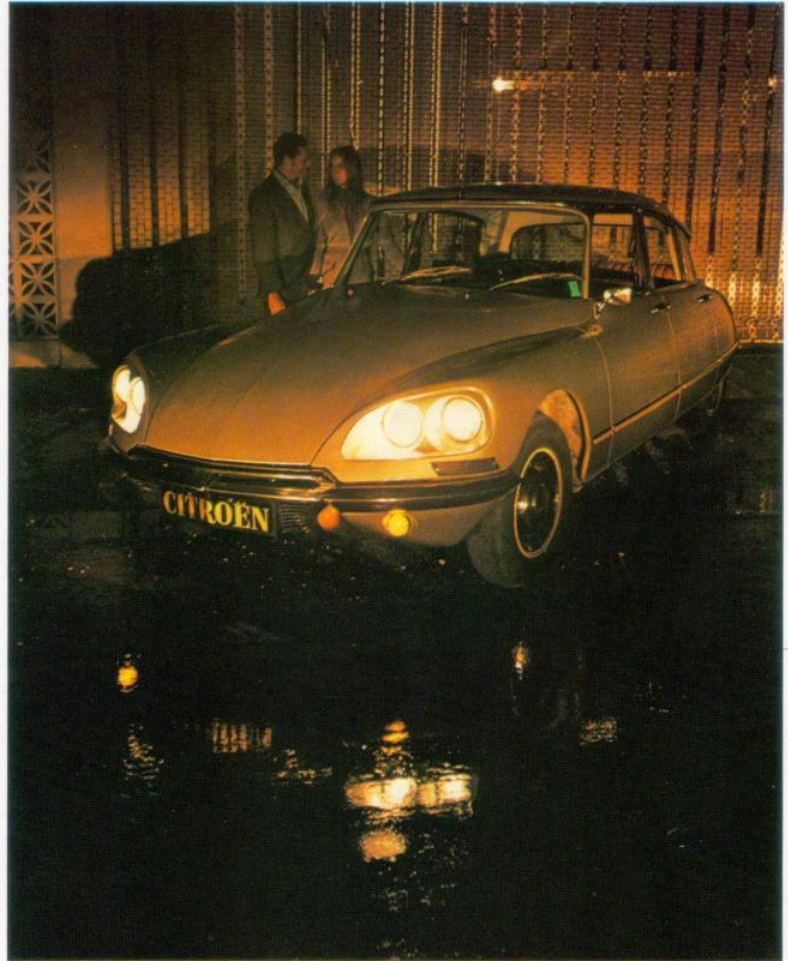
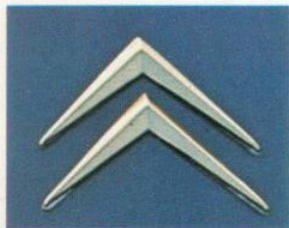
Four-cylinder, five-bearing hemi units from 1985 to 2175 cc. Your choice of four-speed, all-synco transmission or Citromatic Drive depending on model.

Then there's Hydropneumatic suspension with its constant-level ride. Adjustable road clearance.

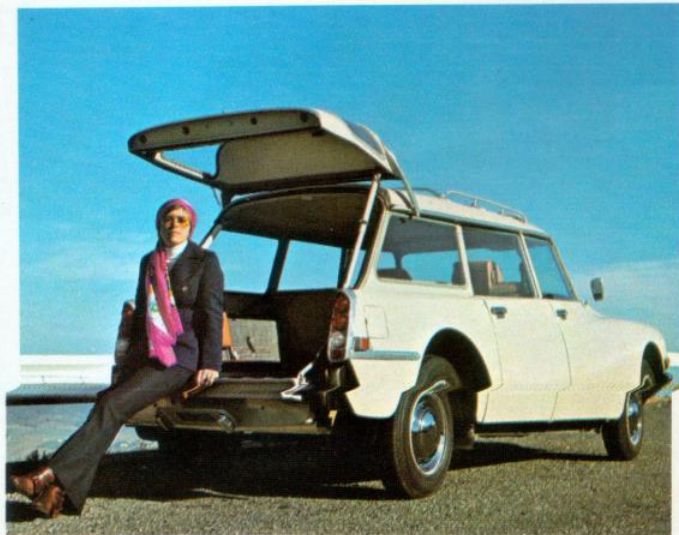
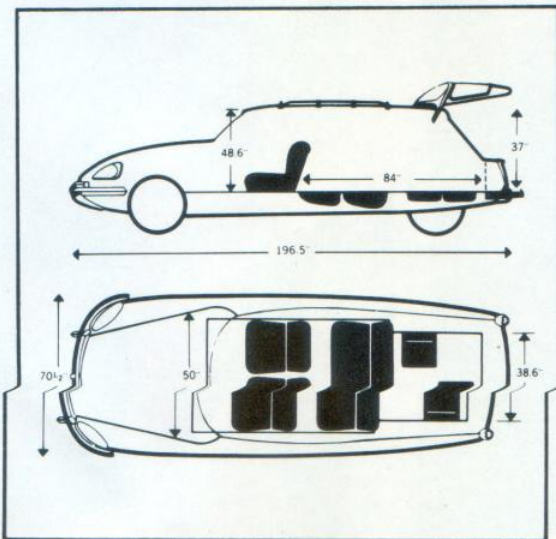
Power assisted rack-and-pinion steering. And of course, Front Wheel Drive.

Interiors are more elegant than ever, too. Fully carpeted. Fully lined with fabric and padded vinyl. Leather throughout, if you like.

See the new Citroen D series for the now decade: D Special, DS-21, DS-21 Pallas. And try one today!



Station Wagon





Citroen D-21 Station Wagon With Constant Level Ride

The Citroen wagon stays constantly level—constantly balanced—at all times. Regardless of load or distribution. It rides at the same height crammed with as many as seven passengers as it does riding absolutely empty.

The reason: hydropneumatic suspension.

Instead of springs, it makes use of air and oil in four separate chambers, combined with independent four-wheel suspension. Even when you pack the wagon with kids and camping gear, a height-correcting device responds to the added weight and returns the wagon to its normal height.

Because of this automatic load leveling, the Citroen wagon doesn't fishtail as do other wagons carrying a heavy rear load. To guard doubly against fishtailing, there's Citroen's front wheel drive. The front wheels pull ahead; you're assured of greater control and road-hugging traction.

Don't be deceived by this wagon's down-to-earthness, though—it's all Citroen. Still superbly styled, still gives up to 25 mpg economy. And even with a $\frac{3}{4}$ ton load, the D-21 Wagon makes you feel as though you're riding the breeze.



Specifications

ENGINE

4-cylinder in line water-cooled. Cast iron block with replaceable wet sleeves. Aluminium alloy head with hemispherical combustion chambers and overhead valves. Five main bearing crankshaft, lubrication by gear driven oil pump with integral full flow oil filter. Carburetion: **DS 21:** double barrel Weber 28 X 36, manual choke; **D Special:** single barrel Solex 35 EISA; Citroen emission and anti-evaporation systems.

	DS 21	D SPECIAL
Displacement:	132.7 cu. in.	121.1 cu. in.
Bore & stroke:	3.5 v 3.3	3.3 v 3.3
Output:	115 hp @ 5750 rpm S.A.E.	98 hp @ 5750 rpm S.A.E.
Torque:	126 ft/lbs. @ 4000 rpm	110 ft/lbs @ 3000 rpm
Compression ratio:	8.75 to 1	8 to 1
Road speed @ 1000 rpm in top gear	20.8 mph	20.3 mph

DRIVE TRAIN

Front Wheel Drive
Clutch: single dry plate
Transmissions:
Manual: four speed fully synchronized with column mounted shift lever
Citromatic drive: finger tip control lever shifts four speed gear box hydraulically (not available on D Special)

	DS 21	D SPECIAL
Final drive 8x35 4.375 to 1		7x34 4.857 to 1
Overall ratio:		
1st: 14.21 to 1		15.79 to 1
2nd: 8.05 to 1		8.90 to 1
3rd: 5.30 to 1		5.87 to 1
4th: 3.73 to 1		4.14 to 1
R: 13.80 to 1		15.33 to 1

Drive shafts—heavy duty
Universals, inboard constant velocity tripod, outboard double cardan constant velocity.

BRAKES

Power assisted dual braking system with reserve pressure accumulator and "minimum" type pedal. Inboard disc on front, drums at rear. Front and rear hydraulic brake circuits are separate and independent, each one having its own pressure supply. Rear suspension pressure controls the proportional braking effort according to load distribution. Pressure warning light on dash for both systems. Sensor warns when brake pad linings are worn. Emergency brake: separate pads acting on front brake disc.

Front disc dia. 11.7/8"
Rear drum dia. 10"

STEERING

Power assisted, rack and pinion 3/4 turns lock to lock. Safety Spoke Steering Wheel. Center point steering geometry. This system minimizes steering efforts and eliminates steering deflection due to outside disturbances (rough roads, pot holes, blow outs).

SUSPENSION

World's Only Hydro-pneumatic Suspension. System independent on all 4 wheels, each with hydraulic suspension unit and built in shock absorbers. Anti-roll bars front and rear, front and rear height correctors ensuring constant level ride and ground clearance regardless of load. Adjustable road clearance and power jacking.

DIMENSIONS AND WEIGHTS

	Sedan	Wagon
Wheelbase	123"	123"
Length	190.5"	196.5"
Height in drive position	58.0"	60.2"
Width	70.5"	70.5"
Track: front	59.0"	59.6"
rear	51.2"	51.8"
Curb weight	2866 lbs.	3087 lbs.
Trunk capacity:	175 cu. ft.	80 cu. ft.
Turning circle:	36 ft.	36 ft.

WHEELS AND TIRES

Balanced, pressed steel with safety rims
Rim size: 5 1/2 J x 15
New all weather high speed Michelin radial steel cord: 180 x 15 XH

ELECTRIC SYSTEM

Battery: 12 volts 55 amp. hours negative ground
Alternator: 45A (35A D Special)
Starter motor output: 2 hp.

CENTRAL HYDRAULIC SYSTEM

Engine driven pump with intermittent cycling and pressure accumulator. Supplies power for brakes, suspension, steering and Citromatic shift systems. Capacity of system 5.5 qts.

CLIMATE CONTROL

Flow through ventilation, independent for driver and passenger. Hot water heater and defroster with high speed electric blower. Defrosts front door windows in addition to windshield. Electric rear window defroster standard on all sedans (optional on SW). Optional air conditioning system.

BODY AND CHASSIS

The body comprises detachable panels mounted to a combined chassis platform and welded space frame, the whole unit being designed to have accident shock absorption zones, both in front of and behind the driver/passenger compartment.

INTERIOR

Exceptional interior space, padding all around, dashboard, sun visor, headliners, armrests, and floor mats. Multicellular foam seats, reclining front seats with head restraints, folding center arm rest in rear. Dashboard complete with tachometer, speedometer (with stopping distances shown), resettable trip meter and Citroen exclusive Master Alert System. Electric clock. Vital controls arranged for finger tip control.

WARRANTY

One full year, unlimited mileage

Citroen
Your Authorized Citroen Dealer is:

CITROEN NORTH AMERICA

Direct Factory Branches of S.A. Automobiles Citroen, Paris, France

UNITED STATES

Citroen Cars Corporation:

East: 40 Van Nostrand Ave., Englewood, N.J. 07631,
(201) 871-3100, (212) 688-1161

West: 12615 Beatrice St., Los Angeles, Calif. 90066,
(213) 390-3505

CANADA

Citroen Canada Ltd.,

East: 5465 Royalmount, Montreal 307, Quebec.
(514) 735-4481

West: 1290 Burrard Street, Vancouver, B.C.
(604) 683-2445

Citroen reserves the right to change and/or modify equipment and/or specifications without notice and without responsibility to previous models, on any model at any time.